

Cleo™ 90 Infusion Set Training Guide

This guide is for use in conjunction with the Cleo™ 90 infusion set. Instructions for Use provided with each box of product.

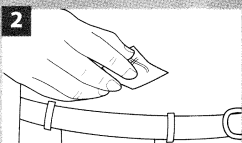
To insert site and connect the tubing set

1



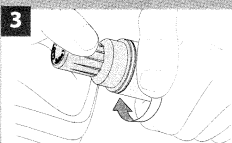
Wash hands, dry thoroughly.

2



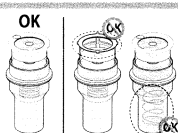
Prepare site, allow to dry.

3



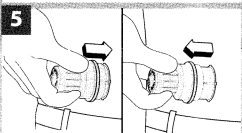
Twist cap to remove.

4



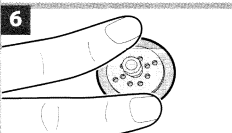
Inspect device for adhesive and insertion needle.

5



Press device firmly on site. Hold for 5 seconds, pull straight off.

6



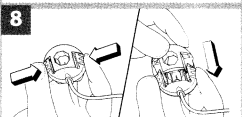
Press to secure adhesive.

7



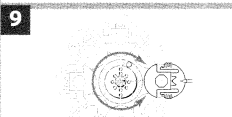
Connect tubing set and fill according to pump User Manual.

8



Pinch slide connector arms inward and slide fully open.

9



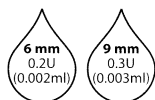
Position site connector onto site with tubing in desired direction.

10



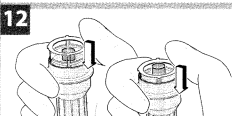
Secure connector over site, push together until audible "click".

11



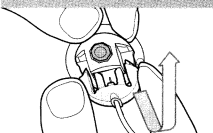
Fill cannula with medication. (U100 insulin)

12



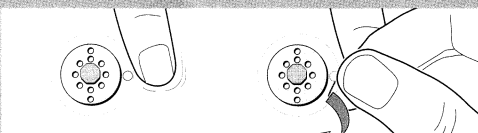
Verify needle retracted. If still visible, press down on outer edge until needle retracts fully.

To disconnect



Pinch connector arms to open. Lift off site.

To remove site



Press finger near peel dot. Peel back adhesive.

Additional Tips

- Do not use if site adhesive is missing from the top of the Cleo™ set.
- Do not use if spring has activated and is visible in the device grip area.
- When Cleo™ set adhesive has touched skin, do not reposition, as adhesive will lift prematurely from the device.
- Before disposal, inspect to see if needle is retracted; if still visible press down on outer edge until needle retracts.
- Dispose of in a manner consistent with other disposable medical products.

NOTE: This training guide is intended as a reference only. Please refer to the Instructions for Use provided with this product, which contains essential information, warnings and cautions of which the user must be made aware.

smthts

Smiths Medical
Medication Delivery and
Patient Monitoring Division
5500 W. 17th Street
Denver, CO 80202

For more information, contact Smiths Medical MD Customer Support at 1-800-826-9703 or visit us on the web at www.cleoinfusionsets.com

Cleo and the Smiths design mark are trademarks of the Smiths Medical family of companies. The symbol ® indicates the trademark is registered in the U.S. Patent and Trademark Office and certain other countries. ©2005 Smiths Medical family of companies. All rights reserved. 8/05 19742

cleo⁹⁰
infusion set