

 0123 **Rx only**

ACCU-CHEK is a trademark of a Member of the Roche Group.

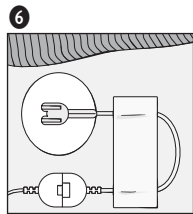
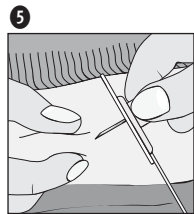
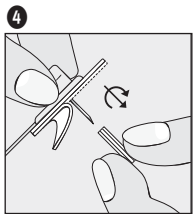
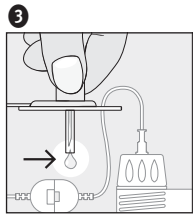
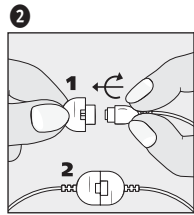
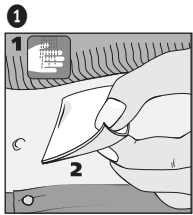
Manufactured for and distributed by:
Fabriqué et distribué pour:
Disetronic Medical Systems, Inc.
Fishers, IN 46038, USA
Toll Free 1-800-280-7801

 Disetronic Medical Systems AG
3401 Burgdorf, Switzerland
www.disetronic.com

Made in EU
Fabriqué en UE

04536525001/01/02.05





Manufacturer
Fabricante
Fabricant



Date of manufacture
Fecha de fabricación
Date de fabrication



Non Pyrogenic
Apirógeno
Apyrogène

STERILE EO

Sterilized using Ethylene Oxide
Esterilizado con óxido de etileno
Stérilisé à l'oxyde d'éthylène



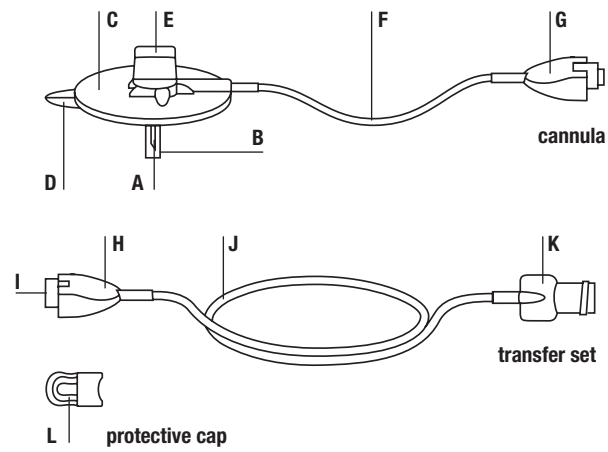
Keep dry
Proteger de la humedad
Garder à l'abri de l'humidité



Do not use if package is damaged
No utilizar si el embalaje está dañado
Ne pas utiliser si l'emballage est endommagé

Instructions for use en
Instrucciones de uso es
Mode d'emploi fr

ACCU-CHEK™
Rapid-D
INFUSION SET



Description

Accu-Chek Rapid-D is an infusion set for the subcutaneous infusion of insulin administered with microdosage insulin pumps.

en

Contents of the cannula package for the Accu-Chek Rapid-D

- A** steel cannula
- B** protective cover
- C** self-adhesive
- D** adhesive backing
- E** disc holder
- F** tubing
- G** connecting piece of cannula

Contents of the transfer set package for the Accu-Chek Rapid-D

- H** connecting piece of transfer set
- I** connector needle
- J** tubing
- K** luer-lock

Contents of the protective cap package for the Accu-Chek Rapid-D

- L** protective cap

⚠ WARNINGS

Read the instructions carefully before use. It is recommended that you consult your insulin pump manual for information regarding pump therapy.

For first time use, setup must be performed in the presence of a health care professional.

- This device remains sterile until the package is opened or damaged. Do not use if the sterile package has been opened or damaged.
- Protect the product from excessive humidity, sunlight and heat. Store at room temperature.
- Prepare the infusion site before insertion according to CDC (Centers for Disease Control and Prevention) guidelines or institutional protocol.
- Discard the set after each use. Do not clean or re-sterilize.
- The Accu-Chek Rapid-D is for subcutaneous use only.
- Always tighten the luer-lock firmly into the pump adapter. If this is not done, danger of leakage can result, due to a loose connection between the infusion set and the pump. Avoid using any tools to screw the luer-lock connector into place. Otherwise damage could result to the luer-lock connector.
- Do not leave air bubbles in the Accu-Chek Rapid-D. Prime thoroughly.
- Never insert the Accu-Chek Rapid-D before priming, or attempt to release blockages while it is in use, otherwise there is a danger of an uncontrolled quantity of insulin being infused into the body.
- Never use a steel cannula for more than 48 hours (2 days). Never use the transfer set for more than 6 days. When changing the cartridge, make sure that the transfer-set is completely primed before connecting to the cannula.

- If the self-adhesive does not stick firmly to the skin, e.g. after a shower or in the case of heavy sweating, affix the Accu-Chek Rapid-D with a transparent adhesive plaster. If the Accu-Chek Rapid-D has slipped out of the skin, use a new infusion set.
- If the infusion site becomes inflamed, replace your Accu-Chek Rapid-D and use a new site.
- Do not put disinfectants, perfumes, deodorants or insect repellent on your Accu-Chek Rapid-D as these may affect the stability of the set.
- Dispose of the infusion set safely, so that nobody can prick or injure themselves on it.
- If you have to disconnect your Accu-Chek Rapid-D, pay particular attention to hygiene and use the protective cap.
- Avoid excessive stress on the infusion site and on the Accu-Chek Rapid-D. Pay attention when carrying heavy weights.
- Check blood glucose level 1–3 hours after inserting your Accu-Chek Rapid-D and inspect the infusion site on a regular basis. Do not insert a new infusion set just prior to bedtime. Check blood glucose frequently (check with your physician).
- If blood glucose level gets unexplainably too high, or an «occlusion» alarm occurs, check for clogs and leaks. If in doubt, change your Accu-Chek Rapid-D.

en

Insert Accu-Chek Rapid-D

Picture 1

Choose a site away from the waistline, bones, scar tissue, belly button and recently used infusion sites. Clean hands and infusion site according to instructions from your health-care professional. Allow the injection site to dry before inserting the Accu-Chek Rapid-D.

Picture 2

Remove the cannula and the transfer set from the sterile packaging. Hold the two halves of the coupling so that they form a cross. Fit the parts directly into one another and connect them in place by turning for one quarter of a turn in a clockwise direction until they click noticeably and audibly into place.

⚠ WARNING

If the two halves of the coupling do not click noticeably and audibly together, use a new cannula and a new transfer set.

Picture 3

Screw the luer-lock (K) firmly into the screw thread of the pump adapter. Make sure there is a cartridge containing sufficient insulin in the cartridge compartment. Place the pump upright and fill the Accu-Chek Rapid-D in accordance with the pump manufacturer's operating instructions. Prime the tubing (F, J) until the medication emerges at the tip of the steel cannula (A). Do not leave air bubbles in either the cartridge or in the tubing of the Accu-Chek Rapid-D.

en

Fill volumes of the complete set:

30 cm/12"	approx. 7 units U 100 insulin	approx. 70 µl
60 cm/24"	approx. 10 units U 100 insulin	approx. 100 µl
80 cm/31"	approx. 13 units U 100 insulin	approx. 130 µl
110 cm/43"	approx. 18 units U 100 insulin	approx. 180 µl

Picture 4

Hold the Accu-Chek Rapid-D firmly between thumb and forefinger at the disc holder (E). With the other hand, remove the adhesive backing (D) from the self-adhesive (C) and twist the protective cover (B) off the steel cannula (A).

Picture 5

With your free hand, pinch together a bit of subcutaneous tissue at the disinfected site. Insert the Accu-Chek Rapid-D under the skin at a perpendicular angle. Press the self-adhesive (C) firmly onto the skin in order to ensure secure seating of Accu-Chek Rapid-D. Bend the disc holder (E) slightly sideways and remove it. In doing this, make sure that the self-adhesive comes to lay flat on the skin.

⚠ WARNING

Change the head-set every 2 days (max. 48 hours). Otherwise you risk insulin resistance or inflammation of the infusion site.
Never use the transfer-set for more than 6 days.

Picture 6

Form a loop to relieve stress and secure it into place with a strip of adhesive plaster. Start distribution through the pump.

Disconnect Accu-Chek Rapid-D

WARNING

Please consult with your health care professional on how to compensate for any missed insulin while you are disconnected. Carefully monitor blood glucose level while disconnected from the pump and after you reconnect.

en

Step 1

Turn off the pump.

Step 2

Grasp the two halves of the coupling and turn for a quarter of a turn in an anticlockwise direction. Pull the two halves of the coupling away from each other, proceeding with caution.

Step 3

Cover both halves of the coupling with the protective caps (L).